

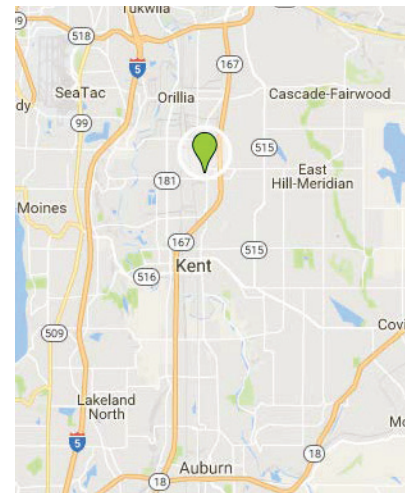
FOR LEASE


KENT OFFICE BUILDING



PROPERTY DETAILS

- 7,774 RSF available
- \$14.00 PSF, NNN
- Turn-key ready office with all new finishes and lighting
- Great mix of privates and open office area
- 5/1000 parking
- Heavy power / Fiber available
- Common area improvements completed
- Great visibility with easy access to I-5, I-405 and SR-167



 20811 84th Ave S
Kent, WA 98032

CONTACT US



PIETROMONACO PROPERTIES

7900 SE 28th ST, Suite 400
Mercer Island, WA 98040
206.607.6020
www.pietroprop.com

JOHN PIETROMONACO

206.232.7502
john@pietroprop.com

DANNY JACKSON

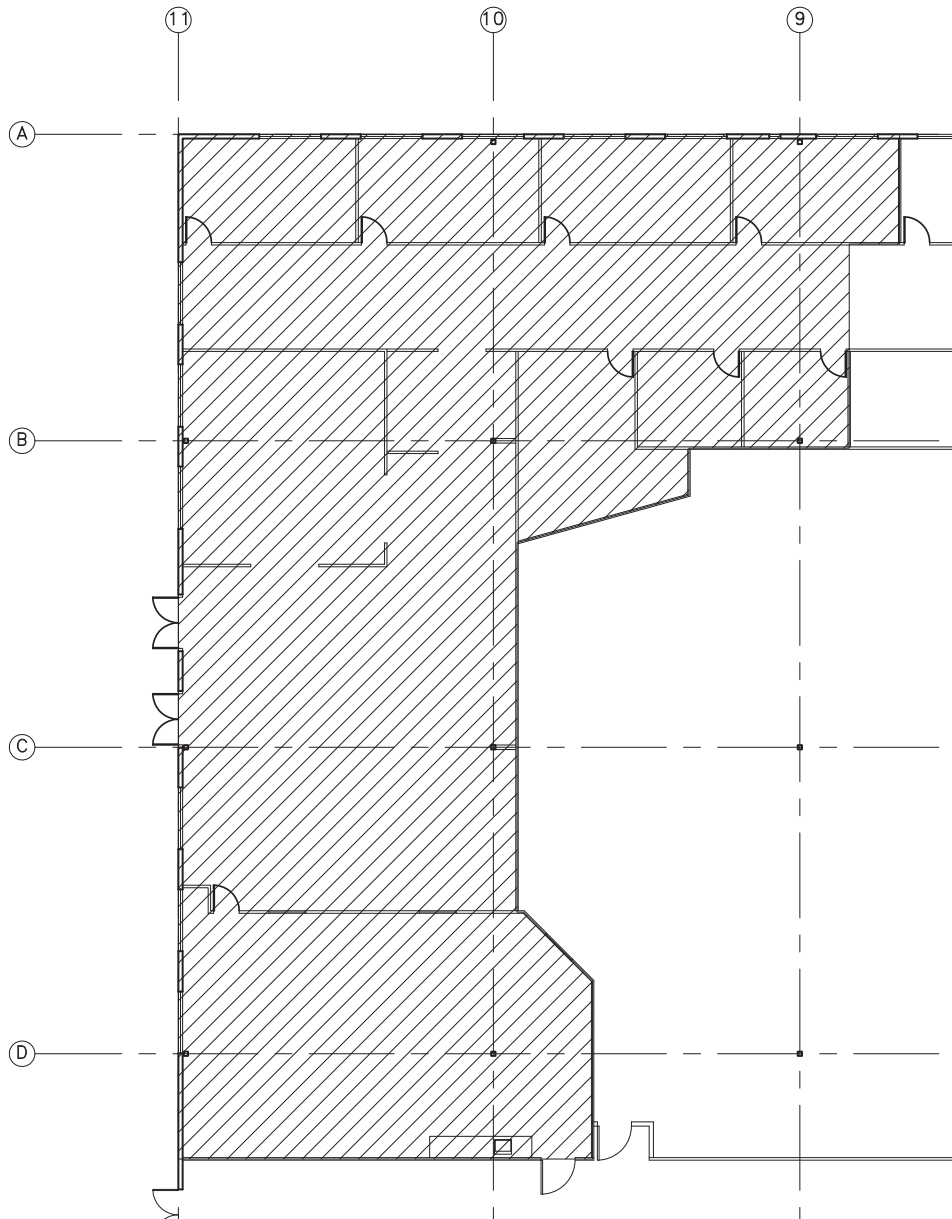
206.607.6021
danny@pietroprop.com

FOR LEASE

KENT OFFICE BUILDING

20811 84th Ave S
Kent, WA 98032

7,774 RSF



PIETROMONACO
PROPERTIES

www.pietroprop.com